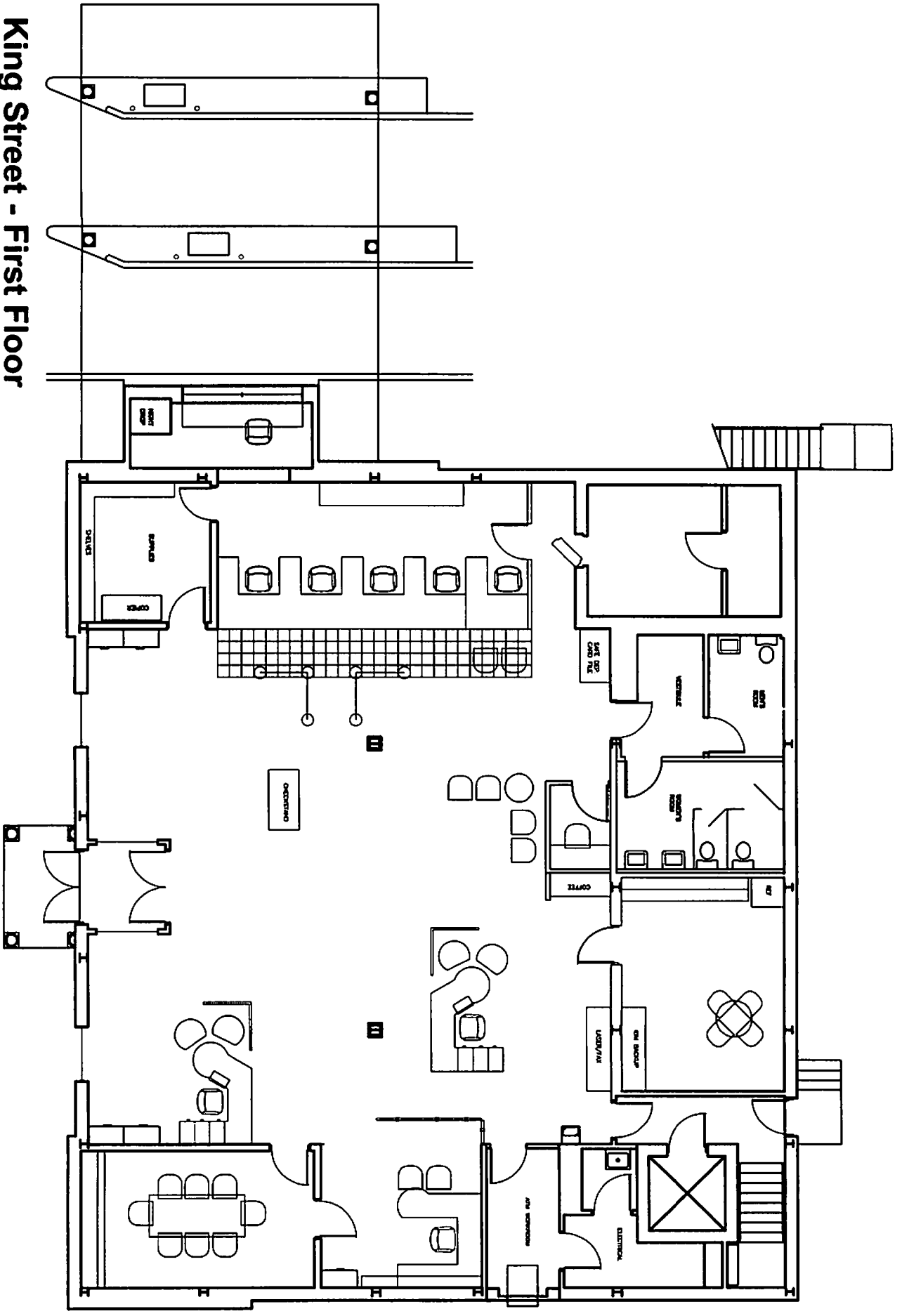
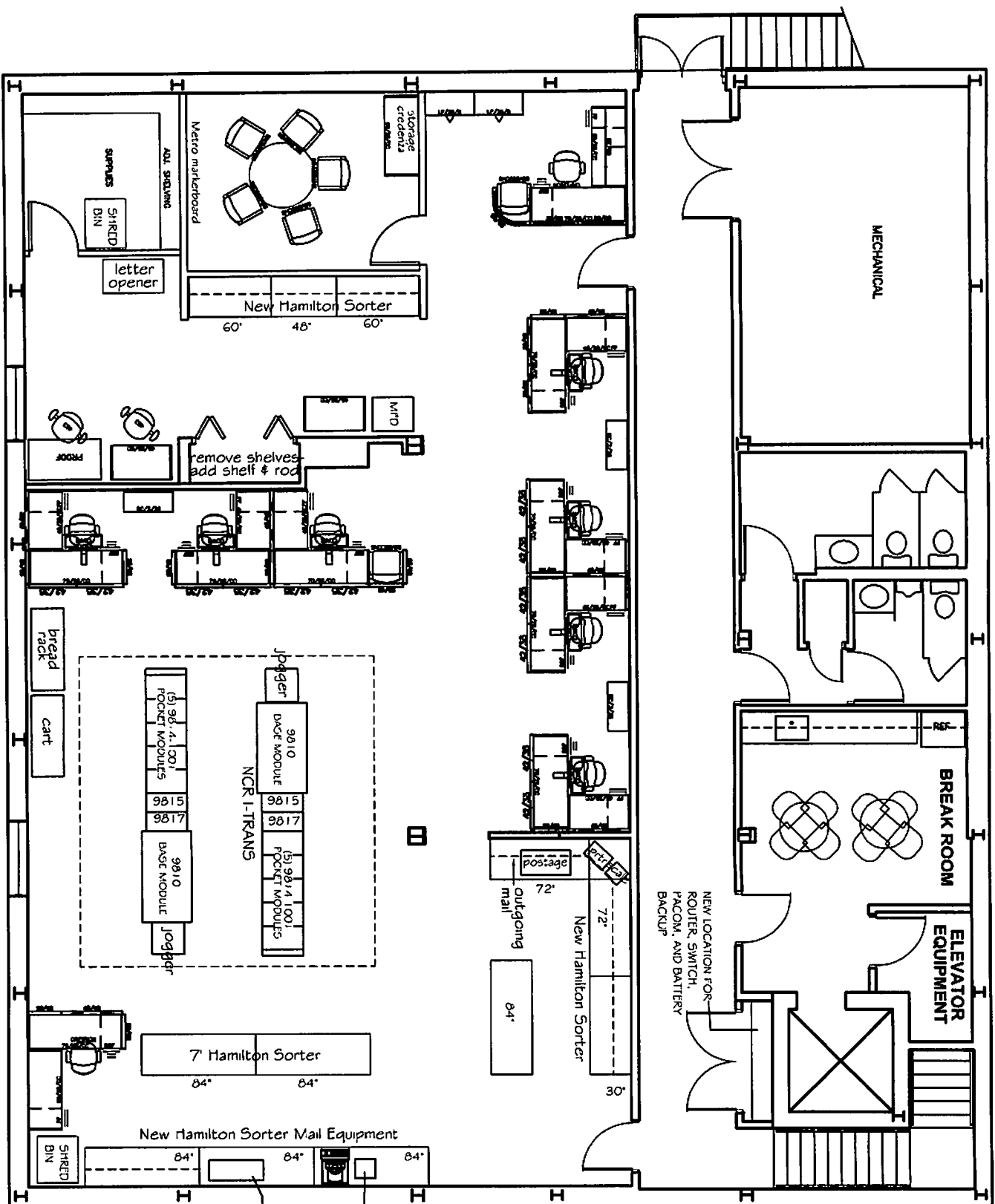


King Street - First Floor



King Street - Second Floor



LETTER OPENER:
 40X15.5X14.75"
 FITS RICOH SPECIFICATIONS:
 110-120 VAC, 60 Hz, 5 AMPS
 220-240 VAC, 50 Hz, 3 AMPS

SCALE WITH
 ATTACHED P.C.

NEW LOCATION FOR
 ROUTER, SWITCH,
 PACOM, AND BATTERY
 BACKUP